

Quorum Court Minutes

3/12/2018

FILED
MAR 14 2018
KADE HOLLIDAY
COUNTY & PROBATE COURT CLERK

March 12, 2018 Quorum Court Meeting

12 Justices of the Peace Present. Justice Ken Stacks was absent.

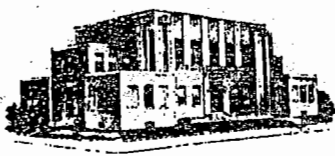
Judge Ed Hill called the meeting to order at 5:30pm.

Judge Hill asked if all present had reviewed the minutes from the last meeting. Justice Weinstock made motion to accept the minutes, Justice Cline seconded the motion.

Judge Hill opened the meeting with a note that there was nothing on the agenda because it was committee night. A couple of things discussed before adjourning to committee meetings. First, noting that students from Arkansas State University Recording Class were present. Second, Judge Hill asked Sheriff Marty Boyd if there had been any changes or updates needing to be discussed. Sheriff Boyd stated that there was nothing new to report. Boyd stated that he, Judge Hill and Tony Thomas were going to meet this week.

With nothing else to be discussed, Judge Hill asked for motion to adjourn to committee meetings. Motion was made by Justice Cline and seconded by Justice Couch.

Committee Reports: The February 2018 Highway Report was provided to all present. A copy of same is attached as ***Appendix 1.***



Craighead County Highway Department

2800 Moore Road
Jonesboro, AR 72401
870-933-4510



Road Report February 2018

During the month of February, no gravel was hauled, a total number 6,269.15 tons of chat from Vulcan and a total number 1,029.06 tons of chat from Bradley, was hauled to the following locations:

304 343 354 338 307 869 109 stockpile

12 Started Bridge work on Nestle to replace panels
 Finished bridge 2-15-18

Tiles (all tiles are on county right-of-way)

8 cleaned out tile on CR 466
13 CR 461 30x40 county tile , 18x30 on CR 187, old tile CR 771 hauled to shop
14 driveway tile on CR 187
20 cleaned out tile on Egg Farm road CR 466
 Removed log from tile CR 488
 Cleaned out tile on CR 604, CR 416, CR 766, CR 338
21 cleaned tile out on CR 440/441 CR 905
22 cleaned out tile on 441 307 905 CR 255
27 completed box culvert on CR 304

Asphalt

1 dug up bad asphalt and replaced it with cold mix on CR 319 CR 324 CR 360
6 CR 333
7 CR 928
8 asphalt roads 204 241 250 270 192 792 791 960 988
 Patched 241 250 270 192 792 960 988
12 dug out asphalt on 928 filled back up with 3 loads cold mix
 Cold mix 988 995 655 541 531 534 817
 Cold mix on CR 792
14 Cold mix CR 425 CR 655 CR 673

15 cold patch 541 506 673 835
 21 patched CR 333 CR 792
 22 cold mix on CR 333 CR 324 CR 307 CR 414 CR 409 CR 425
 26 Cold mix on CR 792 cold mix CR 333 CR 745 CR 755
 27 Rakes & shovels 333 318 307 141 466 616 441 360 714
 28 cold mix CR 414 CR 425 CR 409 CR 905 CR 928 CR 655 CR 520 CR 531 CR 534 CR 872

Signs

5 New green sign and pole on CR 585
 New 40 mph and pole on CR 846
 8 Repaired signs on 179 182 181 187 907 912 check on several other signs
 12 New signs on 361
 4 right curve-----5 left curve-----2 left stripe----- 2 right stripe---2 pavement ends
 14 repaired CR 333/318
 Repaired CR 437 CR 403/432 CR 769 CR 759 Left & right arrow sign
 Repaired 40 MPH on CR 846
 Repaired CR 268 CR 270 CR 277 CR 278 CR 276 CR 273
 Picked up trash on CR 626
 15 Reflection signs (2) CR 342 CR 414
 Speed Limit sign on CR 998
 (2) 30 MPH signs new
 CR 905 Cross traffic does not Stop
 New Green sign CR 512/515
 20 double arrow sign on CR 319/360
 439/Hwy 49 sign ok
 New letters on blue sign on CR 810
 Repaired right curve sign on CR 812
 New green sign CR 808/821
 Repaired Stop sign on CR 841/880
 Repaired Stop ahead sign on CR 905
 Repaired arrow sign on CR 905/928
 27 repaired blue sign on CR 876 CR 273 CR 160
 Repaired arrow sign on CR 241/250
 Flagged traffic on CR 905 CR 910 for repair
 28 trash picked up on CR 766
 Cleaned up around culvert CR 304

Ditching

1 CR 575
 5 CR 7625 CR 461 CR 171
 6 CR 7625 CR 728 CR 559

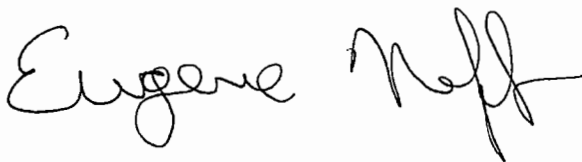
7	CR 171	CR 728	CR 559
8	CR 728	CR 834	
12	CR 728	CR 834	
13	CR 461	CR 854	
14	CR 854	CR 691	
15	CR 691 Lake City		
20	cleaned out ditch on 307		CR 691
21	cleaned ditch on Northside on CR 780		CR 691

Misc.

During the month vehicles were worked on, cleaned up, shop was cleaned, one calls called in for locations

1	Beaver Dam on 197 & 155				
	Shoulder work on 841	840	809	824	815
	Pot holes repaired on 304		343	486	410
	Sb2 hauled to stockpile 11 loads				
	# 60 moved 04 from CR 841 to County shop				
5	1 load sb2 was hauled to Riverside school				
	4 loads rip hauled for the City of Bay				
	2 loads ¾ minus hauled to the City of Monette				
	33 loads of sb2 hauled to stockpile Black Oak				
7	hauled 10 loads chat to Brookland				
8	filled around mailboxes and wash outs on CR 780				
	Tree removal on CR 804				
	Cleaned Black Oak shop				
	Filled sand bags				
	Hauled excavator from 171 to Black Oak, Hauled Backhoe from Black Oak to shop, loaded chat on # 40 and dresses up Black Oak				
	# 35 moved from 171 to Black Oak shop to work on stock pile				
	Worked on 780				
	Hauled slabs to city shop, hauled Boom				
	Hauled 4 loads ¾ minus to Bono City Shop				
12	worked at Black Oak shop				
	Hauled Crain and boom to Nestle for bridge work				
	Moved big fork lift from county shop to Nestle Way				
	Wash out fixed on CR 728	CR 354	CR 728		
13	Shoulder work on CR 846		CR 840		
	14 loads of chat hauled to Brookland School, 8 loads of B-Stone hauled to Brookland School				
	Moved # 71 from CR 728 to 461				
	Sweep shoulder on CR 480				
14	moved dirt at Mangrum Cemetery				

- 15 # 60 moved # 35 Excavator from Black Oak Shop to county shop. Moved # 71 exec from county shop to Riverside High School, moved Q# 71 from Riverside High School to county shop. Moved Big Steel Wheel Roller from shop to Riverside High School. Moved Big Steel Roller from Riverside High School to county shop.
Hauled 8 loads chat to Lake City School
- 20 City of Bay 11 loads of chat
City of Monette 4 loads of chat
Beaver Dam removed on Clay Cornwell Road
Picked up trash on 414 401
Shoulder work on CR 846
Hauled boom to Kathleen, slabs to City shop
- 21 washout repaired on CR 461, CR 478, CR 751, CR 460, CR 468, CR 403, CR 480, CR 456, CR 869
Rain-barrel outs on 187-181
Road Closed signs CR 263/264, CR 264/Hwy 226 CR 821/820 CR 912
Checked various roads, 155,189,187,197,270,268,255,263.441,440,439,431,412
Brookland School 14 Loads B-Stone
City of Caraway 1 load ¾ minus
- 22 City of Caraway 1 load ¾ minus
Chat hauled to stockpile
Wash out 308 774 137 150 317 spread chat on 147
Removed drifts on CR 616 CR 618
Pot hole 333
Removed drifts on CR 204
Road closed signs CR 202 CR 452 CR 441
Removed tree on CR 104
- 23 water---- put out road closed signs tile washed out on CR 343--- CR 378--tree down
- 24 sand bag house on CR 159--trees down on CR 378 ---cold patch on CR 905 all due to rain
- 26 #039 & # 60 moved crain boom from Shop to CR 304, moved concrete tile form Scurlock to CR 304, wash out on CR 804
35 # drove 30, moved # 71 TO CR 204, removed drift
- 27 shoulder work on 541
30 drove unit 71 to remove a drift back for repair CR 423
- 28 pick up trash on 766
Pick up trash on several roads
Wash out on CR 936 CR 423 CR 461
Shoulder work CR 541



Eugene Neff
Road Superintendent
EN/ca

**Grader Report
February
2018**

Phillip Hurst – Caraway Route

1	831	852	878	874	866	860	861		
5	508	509	500	512	513	856			
6	Hatchie Coon		850	844					
12	Black Oak Shop								
13	837	831	841	864					
26	837S	890	841	855	878	838	862	858	859
27	837	831	837	834	847				

Steve Boyd – N Jonesboro Route

1	773	774	775	757					
5	798	789	777	769	729	749			
7	785	771	799	796	795	797	790	761	
8	306	303	700	710	713	764	773		
14	spread chat on 773								
15	741	740	703	706	765	763			
19	774	775	757	787	7808	745			
20	729	749	7516	7182	713	700	710		
27	703	706	740	741	771	769			

Robert Anderson – Lester Route

1	959	960	961	952	951	943	953	940		
5	999	998	997	995	994	990	993	975	924	936
6	959	969	970	979	931	977	973	934		
13	937	938	947	963	957	965	955			
27	worked on wash outs									

Mark Haines & Jeff Sanford – Bono Route

1	398	147	150	137							
5	194	171	137S	124	125						
6	300	3335	367	326	336	323	378	308	383	spread chat 343	
8	304	337	365	335	329	305	396	303	348	338 369 360	
	361	380	spread chat on 338			348	304				
12	119	117	111	132	133	131	149	191	190	194 101 spread	
	chat on 353										

13	394	383	328	308	378	326	323	336	304	372	374	317
	774	spread chat on 774										
26	398	383	326	361	372	374	317	315	314	348	320	360
	304											
27	328	308	394	378	379	389	377	331	300	3335	361	364
	380	124	125	137	120	122	123	112	119	117	111	spread
chat on 308												

Mark Emery – Bay Route

1	681	680	691	821	spread chat on 809			815	824
5	693S	686	682	821W	804				
13	693N	652	626						
26	639	672W	641	804/821	spread chat on 808			813	
27	664	913	672	690	675	678	681		

Curtis Sharp - Misc Route

1	616	618	625	604							
5	912	914	916	197	910	915					
6	907	906	909	937	938						
13	912	621	608	635	636	638	616				
20	spread chat on 674										
22	spot graded 604			621	608						
26	910	915	912	927	part of 907	952	953	960			
27	604	611	602	607	608	621	619	624	617	615	616

Timmy Gyngard - Monette Route

1	559	560	562	518	522	526	585	548	524
5	531	512	514	515	553	542	544	538	
6	502	506	543	557	560	549			
26	504	548	549	506	543	560	502		
27	531	(2)	530(2)	522	512				

Glen Graham – Bay Route

26	648	650	664	693	686	683
----	-----	-----	-----	-----	-----	-----

Mark Knight – Cash Route

1	167	173	168	157	177	172
5	179	264	246			
6	255	263	268			

7 patched holes on 928
 8 checked and fixed 911 signs
 12 patched holes on 928
 13 185 181 192 191 spread chat on 191
 14 checked 911 signs
 15 help haul bridge slabs
 20 picked up trash on 401 414
 21 checked roads for wash outs
 22 fixed wash outs on 187 441
 26 fixed wash outs on 187 192 255
 27 270 277 278 267 259

Bryan Tyler – Valley View Route

1 461 442 468 472 462 460 467 463 429 430 415 200
 201 102 104 108 109 202 spread chat on 486
 5 441 450 444 440
 6 438 439 431 412 423 452
 12 209 210
 13 423 spread chat on 423 444
 14 452 440
 26 403 432 456 480 474 478 462 468 482 486 461 442
 472 460 467 463 429 430 411 405
 27 452 451 423 412 431 439
 28 spread chat 109